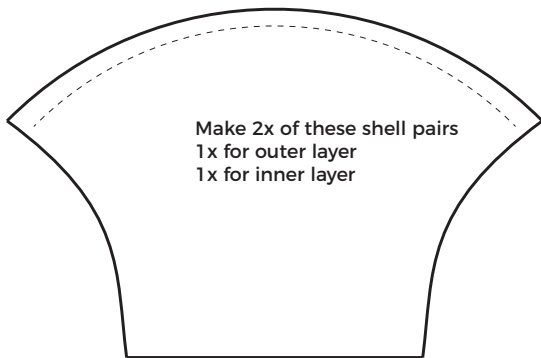
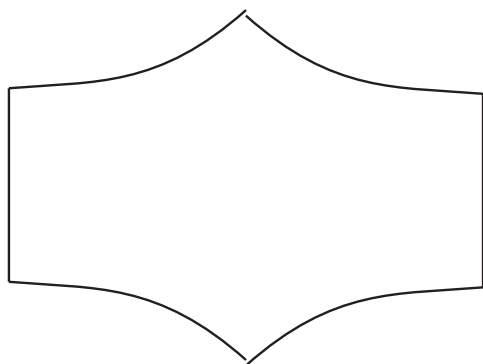


Mask Force Face SEMI-FAST Mask Instructions

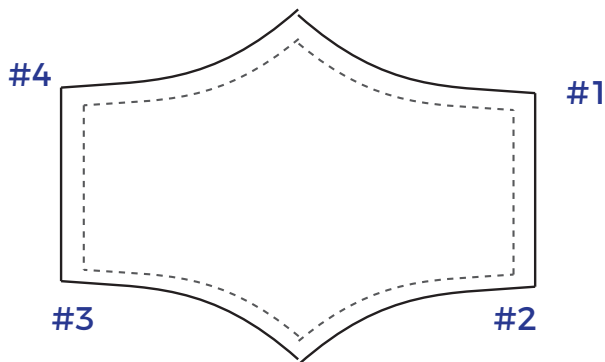


- 1) Put 2x pieces together with face of fabric facing each other
- 2) dotted line is the sew line - sew with 1/4" seam along front curve. Do this 2x for each mask so you have two shells
- 3) Also cut lengths of elastic for step two
 - a) Large = 8"
 - b) Medium = 7"
 - c) smaller = 6"You can also cut the whole mask about 1/2" smaller all around to make a child's mask, then use 6" elastic

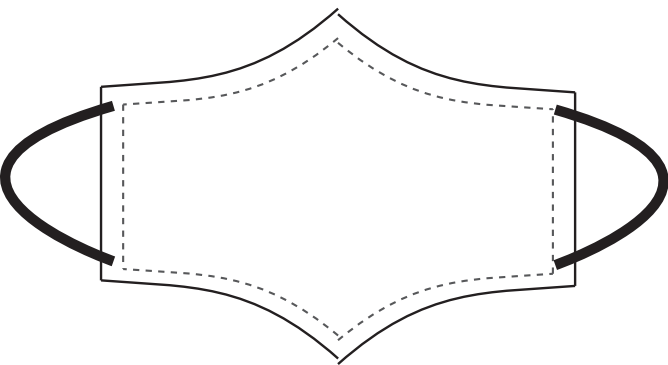


After you sew the curved edge together of 2x pairs. You will have a face mask that looks something like this when you open and flatten it out. You should have 2x of these completed per face mask.

- 1) Take both sewn together shells and put them together with the seam EDGE facing each other. So that both seams are hidden when you put them together.
- 2) Now you have a full mask ready to sew together.



- 1) After folding seam over, start sewing at corner #1
- 2) sew folded seam along edge from #1 to #2
- 3) Turn face mask piece 90 degrees so #2 edge is straight
- 4) sew all along semi-curved edge with 1/4" folded seam from point #2 to point #3
- 5) keep folding seam in 1/4" and sew around outside of the two mask shells till complete
- 6) Now you have a completed double layer mask with the seams facing in.



Now simply sew the correct length of elastic to each edge
sew the elastic to the inside edge of the seam so that it is NOT showing on the outside